

# A Rare case of Miller Fisher Syndrome with Ophthalmoplegia with Bulbar Palsy with Bifacial Weakness with Progressive Quadriparesis

Ritul Srivastava<sup>1</sup>, Priya Govil<sup>2</sup>, Kishalay Datta<sup>3</sup>

## How to cite this article:

Ritul Srivastava, Priya Govil, Kishalay Datta/ A Rare Case of Leech Therapy Induced Right Foot and Leg Cellulitis with Septic Shock/Indian J Emerg Med 2022;8(2):61-65.

## Abstract

A 20 years old female came to ED with c/o giddiness since 4 days, headache since 3 days with diplopia with slurring of speech, lower limb weakness, difficulty in swallowing, and dropping of left eyelid since 1 day. Patient had no any pre-existing comorbidity and not on any regular medication. Last menstrual period was on 5 days back. On examination Patient was vitally and haemodynamically stable. Diplopia on right sided distant vision present. Venous blood gas samples showed Hyponatremia. On CNS examination the Glasgow coma scale was 15/15 with power in upper and lower limb 5/5 bilaterally. There was no neck stiffness. Gag reflex present.

Patient was taken immediately on symptomatic supportive treatment and admitted in Intensive care unit. Patient was planned for contrast enhanced MRI brain, lumbar puncture for CSF study, chest x-ray, ultrasound whole abdomen. Blood samples for complete haemogram and other relevant blood investigations with serum electrolytes sent for further study.

**Keywords:** Miller Fisher Syndrome; Ophthalmoplegia; Anti GQ1b antibody.

## INTRODUCTION

**Miller Fisher Syndrome:** Is an autoimmune rare acquired nerve disease named after Dr. Charles Miller Fisher, a Canadian neurologist. It causes weakness of eye muscles that leads to difficulty in moving the eyes. The disease is related to Guillain Barre Syndrome and so also leads to unsteadiness

and impaired limb coordination and may also leads to absent tendon reflexes. It may also characterised with weakness of facial muscles, tongue, swallowing muscles and limb weakness and also may lead to respiratory failure. Childrens and adults both can be affected. Reasons behind the disease are generally viral and bacterial infections especially Campylobacter Jejuni and Haemophilus Influenzae and the symptoms may occur approximately after 4 weeks. The disease has three defining features as follows:

- Ophthalmoplegia i.e, weakness of eye muscles that leads to impaired eye movements and double vision
- Ataxia i.e, impaired coordination of limbs
- Areflexia i.e, absence of tendon reflexes

**Author Affiliation:** <sup>1</sup>Resident, <sup>2</sup>Senior Consultant, <sup>3</sup>Associate Director, Department of Emergency Medicine, Max Hospital, Shalimar Bagh, New Delhi 110088, India.

**Corresponding Author:** Priya Govil, Senior Consultant, Department of Emergency Medicine, Max Hospital, Shalimar Bagh, New Delhi 110088, India.

**E-mail:** drpriyasharma5@gmail.com

**Received on:** 04.02.2022

**Accepted on:** 07.03.2022

Treatment for the syndrome includes intravenous immunoglobulins, plasmapheresis and steroids. Most of the patients recovers within six months and deaths are noted very rarely.

**Ophthalmoplegia:** is defined as paralysis of extraocular muscles which helps in eye movements. It is classified as

- Internal ophthalmoplegia in which papillary sphincter and ciliary muscles are involved
- External ophthalmoplegia in which extraocular muscles are involved which includes superior rectus, inferior rectus, medial rectus, lateral rectus, the inferior oblique, and superior oblique muscles
- Complete ophthalmoplegia that includes both external and internal

**Anti GQ1b Anti body:** also known as Antiganglioside antibodies and were first found to react with cerebellar cells. These antibodies are mainly affecting Schwann cells. Initially its difficult to diagnose the Miller Fisher Syndrome because it mimics some other diseases too, for example, myasthenia gravis, botulism, basal meningitis, brain stem stroke, diphtheria, brain stem encephalitis. So the treating doctor can rule out the diagnosis by considering the test for anti GQ1b antibody which help to diagnose Miller Fisher Syndrome.

## CASE STUDY

A 20 years old female came to ED with c/o giddiness since 4 days, headache since 3 days with diplopia with slurring of speech, lower limb weakness, difficulty in swallowing, and dropping of left eyelid since 1 day. Patient gave a history of lower respiratory tract infection and gastrointestinal upset one month ago. Patient had no any pre-existing comorbidity and not on any regular medication. Last menstrual period was on 5 days back. On examination Patient was vitally and haemodynamically stable. ECG showed normal sinus rhythm. Random blood sugar: 73 mg/dl.

**On Auscultation:** B/L air entry was present. On Per Abdomen examination: soft, non tender and bowel sounds were present. Urogenital The urogenital examination was insignificant. Diplopia on right sided distant vision present. Venous blood gas samples showed Hyponatremia. On CNS examination the Glasgow coma scale was 15/15 with power in upper and lower limb 5/5 bilaterally. There was no neck stiffness. Gag reflex

present.

Patient was taken immediately on symptomatic supportive treatment and admitted in Intensive care unit. Patient was planned for contrast enhanced MRI brain, lumbar puncture for CSF study, chest x-ray, ultrasound whole abdomen. Blood samples for complete haemogram and other relevant blood investigations with serum electrolytes sent for further study.

Patient was admitted and discharged after 19 days in stable condition.

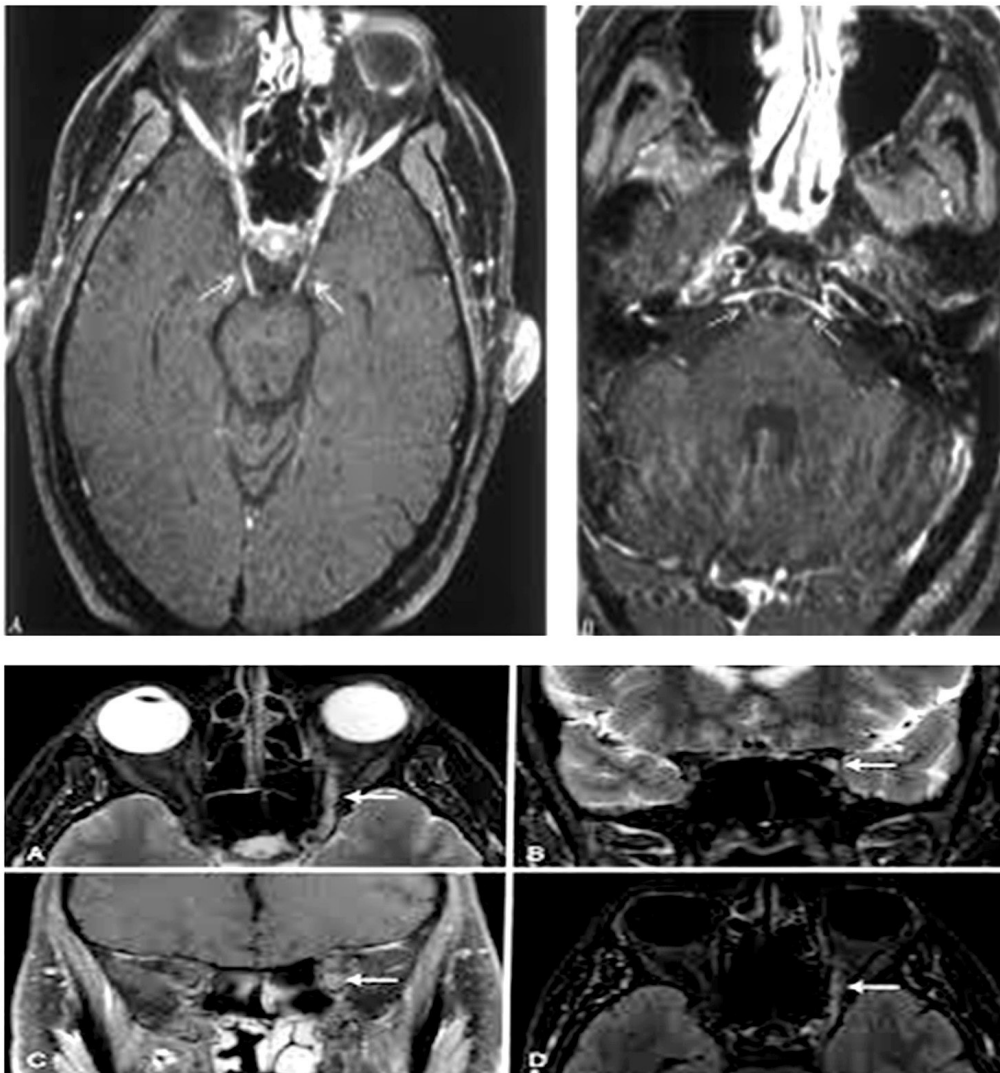
### Course in the Hospital and Outcome:

A 20 year old female patient was admitted with above mentioned complaint. Patient was initially evaluated in emergency department and then shifted to intensive care unit for further management. Covid 19 rapid antigen test done in emergency department was negative. Other routine investigations were done. Ryle's tube was inserted and treatment was started with intravenous antibiotic, injection solumedrol, intravenous fluids and other symptomatic supportive treatment.

Patient came with MRI brain report done outside pre-arrival to the hospital which showed right frontal lobe hypodensity. Contrast enhanced MRI brain was done which revealed subcortical white matter edema involving right posterior frontal lobe. Lumbar puncture was done. Clear cerebrospinal fluid was obtained and placed in 4 vials. Needle was removed after adequate fluid collected. Procedure The procedure was uneventful and sample was sent for evaluation. The differentials include demyelination, focal cortical dysplasia, focal edema.

Close monitoring suggested for further evaluation. MRI whole spine screening was done which revealed a normal study. Complete course of intravenous immunoglobulin (total dose of 90 gm) was given during the hospital stay. Ultrasound whole abdomen was done which revealed mild free fluid in the pelvis. Laboratory report shows hyponatremia. Chest x-ray showed right CP angle blunt.

Speech and language consultation was advised. Repeat laboratory report results appeared normal. The patient was managed conservatively and responded well to the given treatment. After stabilization, the patient was shifted to the ward. Regular monitoring was done and patient was discharged in stable condition after 19 days.



## DISCUSSION AND THERAPEUTIC CONSIDERATIONS

Miller fisher syndrome is a very rare disorder. Some points we have to remember always that if the patient presents with neurological symptoms and ataxia, ophthalmoplegia, areflexia areflexiaand had a history of respiratory tract infection and/or gastrointestinal upset some weeks/days before, we have to proceed carefully. It may be stroke or transient ischaemic attack or other disease like Miller Fisher Syndrome which mimics stroke. If there is any suspicion of presence of Miller Fisher Syndrome, we can proceed with the approach by following investigating tools:

- CSF study via lumbar puncture: there will be an albuminocytologic dissociation and/or normal cell count present with increased level of protein in CSF.
- CT/MRI scan of spine may show thickening

and enhancement of Intrathecal spinal nerve roots and Cauda Equina. It can present with some spinal roots enhancement also.

- Electrodiagnostic studies: There will be diminished or absent sensory responses without slowing of sensory conduction studies.
- There is a validated and quantitative tool known as Brighton criteria that involves clinical history, physical examination, laboratory findings and radiological imaging to diagnose Miller Fisher Syndrome.

## CONCLUSION

*Why should an emergency physician be aware of Miller Fisher Syndrome:* As we discussed above that Miller Fisher Syndrome mimics Acute stroke. Number of acute stroke cases has been increased comparatively as earlier because of more fat rich

unhealthy diet, lack of exercises, smoking, drinking, increased comorbidities and others modern life-induced reasons. There is always a high chance of misdiagnosis of Miller Fisher syndrome. An emergency physician must know about Miller Fisher syndrome for the better approach. The condition can be easily treated if diagnosed earlier with intravenous immunoglobulins, pain control, steroids, respiratory support if needed, plasmapheresis and other symptomatic supportive treatment.

## REFERENCES

- Judith E. Tintinalli, J. Stephan Stapczynski, O. John Ma, Donald M. Yealy, Garth D. Meckler, David M. Cline. Tintinalli's Emergency Medicine, 8th ed. United States: McGraw-Hill Education; 2016.
- Victoria Stacey, revision notes for MCEM part B, 2012
- Vojdani A, Vojdani E. Reaction of antibodies to *Campylobacter jejuni* and cytolethal distending toxin B with tissues and food antigens. *World J Gastroenterol*. 2019 Mar 07;25(9):1050-1066. [PMC free article] [PubMed]
- Mwansa H, Obiekezie O, Kaneria S. A Case of Miller Fisher Syndrome. *Am J Med*. 2019 Jun;132(6):e591-e592. [PubMed]
- Berlit P, Rakicky J. The Miller Fisher syndrome. Review of the literature. *J Clin Neuroophthalmol*. 1992 Mar;12(1):57-63. [PubMed]
- Bukhari S, Taboada J. A Case of Miller Fisher Syndrome and Literature Review. *Cureus*. 2017 Feb 22;9(2):e1048. [PMC free article] [PubMed]
- Pritchard J, Appleton R, Howard R, Hughes RA. Guillain-Barré syndrome seen in users of isotretinoin. *BMJ*. 2004 Jun 26;328(7455):1537. [PMC free article] [PubMed]
- Wakerley BR, Uncini A, Yuki N., GBS Classification Group. GBS Classification Group. Guillain-Barré and Miller Fisher syndromes--new diagnostic classification. *Nat Rev Neurol*. 2014 Sep;10(9):537-44. [PubMed]
- Tham SL, Prasad K, Umapathi T. Guillain-Barré syndrome mimics. *Brain Behav*. 2018 May;8(5):e00960. [PMC free article] [PubMed]
- Ropper AH. The Guillain-Barré syndrome. *N Engl J Med*. 1992 Apr 23;326(17):1130-6. [PubMed]
- Sejvar JJ, Baughman AL, Wise M, Morgan OW. Population incidence of Guillain-Barré syndrome: a systematic review and meta-analysis. *Neuroepidemiology*. 2011;36(2):123-33. [PMC free article] [PubMed]
- Kuwabara S. [Pathophysiology of Ataxia in Fisher Syndrome]. *Brain Nerve*. 2016 Dec;68(12):1411-1414. [PubMed]
- Marziali S, Picchi E, Di Giuliano F, Altobelli S, Mataluni G, Marfia G, Garaci F, Floris R. Acute disseminated encephalomyelitis following *Campylobacter jejuni* gastroenteritis: Case report and review of the literature. *Neuroradiol J*. 2017 Feb;30(1):65-70. [PMC free article] [PubMed]
- Jing C, Wang Z, Chu C, Dong M, Lin W. Miller-Fisher syndrome complicated by Bickerstaff brainstem encephalitis: A case report. *Medicine (Baltimore)*. 2018 Mar;97(9):e9824. [PMC free article] [PubMed]
- Ropper AH. Unusual clinical variants and signs in Guillain-Barré syndrome. *Arch Neurol*. 1986 Nov;43(11):1150-2. [PubMed]
- Ropper AH. Further regional variants of acute immune polyneuropathy. Bifacial weakness or sixth nerve paresis with paresthesias, lumbar polyradiculopathy, and ataxia with pharyngeal-cervical-brachial weakness. *Arch Neurol*. 1994 Jul;51(7):671-5. [PubMed]
- Paparounas K. Anti-GQ1b ganglioside antibody in peripheral nervous system disorders: pathophysiologic role and clinical relevance. *Arch Neurol*. 2004 Jul;61(7):1013-6. [PubMed]
- Winer JB. An update in Guillain-Barré syndrome. *Autoimmune Dis*. 2014;2014:793024. [PMC free article] [PubMed]
- Uchibori A, Gyohda A, Chiba A. Ca<sup>2+</sup>-dependent anti-GQ1b antibody in GQ1b-seronegative Fisher syndrome and related disorders. *J Neuroimmunol*. 2016 Sep 15;298:172-7. [PubMed]
- Koga M, Gilbert M, Takahashi M, Li J, Hirata K, Kanda T, Yuki N. GQ1b-seronegative Fisher syndrome: clinical features and new serological markers. *J Neurol*. 2012 Jul;259(7):1366-74. [PubMed]
- Yuki N. [Molecular Mimicry and Guillain-Barré Syndrome]. *Brain Nerve*. 2015 Nov;67(11):1341-6. [PubMed]
- Chaudhry F, Gee KE, Vaphiades MS, Biller J, Jay W. GQ1b antibody testing in Guillain-Barré syndrome and variants. *Semin Ophthalmol*. 2006 Oct-Dec;21(4):223-7. [PubMed]
- Phillips MS, Stewart S, Anderson JR. Neuropathological findings in Miller Fisher syndrome. *J Neurol Neurosurg Psychiatry*. 1984 May;47(5):492-5. [PMC free article] [PubMed]
- Ropper AH. Miller Fisher syndrome and other acute variants of Guillain-Barré syndrome. *Baillieres Clin Neurol*. 1994 Apr;3(1):95-106. [PubMed]

25. Ropper AH, Shahani B. Proposed mechanism of ataxia in Fisher's syndrome. *Arch Neurol.* 1983 Sep;40(9):537-8. [PubMed]
26. Malhotra A, Zhang M, Wu X, Jindal S, Durand D, Makhani N. MRI findings of optic pathway involvement in Miller Fisher syndrome in 3 pediatric patients and a review of the literature. *J Clin Neurosci.* 2017 May;39:63-67. [PubMed]
27. Illes Z, Blaabjerg M. Cerebrospinal fluid findings in Guillain-Barré syndrome and chronic inflammatory demyelinating polyneuropathies. *Handb Clin Neurol.* 2017;146:125-138. [PubMed]
28. Kuwabara S, Sekiguchi Y, Misawa S. Electrophysiology in Fisher syndrome. *Clin Neurophysiol.* 2017 Jan;128(1):215-219. [PubMed]
29. Wong AH, Umapathi T, Nishimoto Y, Wang YZ, Chan YC, Yuki N. Cytoalbuminologic dissociation in Asian patients with Guillain-Barré and Miller Fisher syndromes. *J Peripher Nerv Syst.* 2015 Mar;20(1):47-51. [PubMed]
30. Fross RD, Daube JR. Neuropathy in the Miller Fisher syndrome: clinical and electrophysiologic findings. *Neurology.* 1987 Sep;37(9):1493-8. [PubMed]
31. Sonoo M. [Keypoints of the guideline for management of Guillain -Barré syndrome and Fisher syndrome, 2013]. *Nihon Rinsho.* 2015 Sep;73 Suppl 7:394-9. [PubMed]
32. Patwa HS, Chaudhry V, Katzberg H, Rae-Grant AD, So YT. Evidence-based guideline: intravenous immunoglobulin in the treatment of neuromuscular disorders: report of the Therapeutics and Technology Assessment Subcommittee of the American Academy of Neurology. *Neurology.* 2012 Mar 27;78(13):1009-15. [PubMed]
33. Ueda M, Kusunoki S. [Autoimmune neuropathies: diagnosis, treatment, and recent topics]. *Brain Nerve.* 2011 Jun;63(6):549-55. [PubMed].

